



INVERNESS HARBOUR EXTENSION

Client:
Morrison Construction

Summary:
We were asked to install permanent sheet piles to facilitate the construction of an extension to the existing harbour wall to form a new quay and marina.

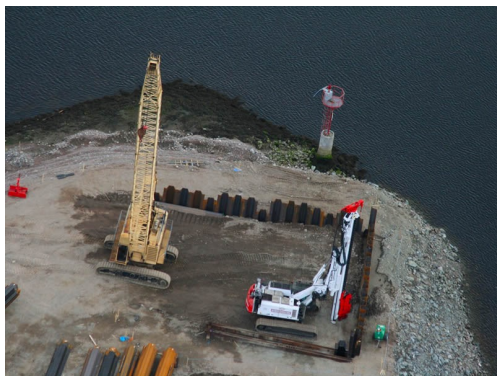


Aerial view of works underway at Inverness Harbour

PROJECT DETAILS

This project involved the installation of permanent sheet piles, tie rods and walings at Inverness Harbour. We used AZ46 piles at 18m, AZ48 at 19m and AU16 piles at 3.5m using our 16/20 Telescopic Leader Rig.

The piling covered an area of appx 5130m² and took 6 weeks to complete with contract value of £170K



Starting to Pile



Piling Works Underway



13/16 Leader Rig with Vibratory Hammer



INVERNESS HARBOUR EXTENSION



The Piles going down with the Vibratory Hammer



The 13/16 ABI Telescopic Leader Rig at Inverness