



## OLD FISH PIER REFURBISHMENT AT SCRABSTER

Client:

**R J Mcleod**

Summary:

We were asked to install a permanent combi wall for the new alignment of the quayside at Scrabster.



Aerial view at Scrabster

## PROJECT DETAILS

This project involved the installation of permanent tubes and piles, complete with an anchorage system and tie bars.

The works were done by conventional techniques, using both a 250T and 180T cranes. We used 1320 tubes and AZ28-700 piles to form the 350 linear metre combi wall and took just over 6 months to complete with a contract value of over £1M

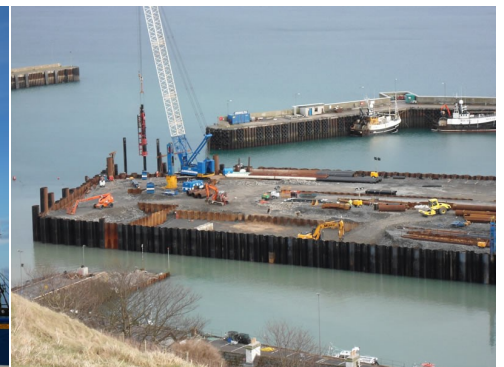
The final result now gives a heavy lift area for offloading larger vessels which was the aim of the project.



Combi Wall at Scrabster



Installing the piling tubes



Piling works underway