



TRENT VALLEY 4 TRACKING UNDER POSSESSION, LICHFIELD

Client:

**Buckingham Group
Contracting Ltd**

Summary:

Our works formed part of the new Trent Valley 4 Tracking Scheme to widen the West Coast Main Railway Line to four tracks between Tamworth and Lichfield for Network Rail.



13/16 Leader Rig working at Trent Valley

PROJECT DETAILS

Permanent Installation of 600no 610mm diameter steel OLE foundation piles, varying from 3.5m to 6.5m in length, using a combination of conventional piling equipment and specialist road rail equipment.

The scope of these works comprised of the distribution and installation of approx 34Nr 610mm O.D. Steel Tubular Piles (to Plain Line 1) and 600nr610mm diameter steel OLE foundation piles to act as foundations for overhead cable gantry structures, using a combination of conventional piling equipment and specialist road rail equipment. The Pile lengths varied from 3.5 metres to 6.5 metres.

Due to access restrictions a number of pile positions could not be accessed by any other means than a machine working on the existing railway infrastructure, it was necessary for the piles to be installed using a combination of vibratory and impact driving equipment, all handled by a road rail crane during periods of full possession of the line.



TRENT VALLEY 4 TRACKING UNDER POSSESSION, LICHFIELD



Trackside working under possession



Trent Valley works under possession



Tubular Piling



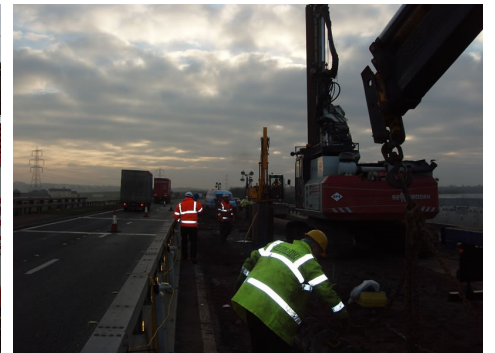
Working close to residential properties



13/16 Leader Rig working by the track



Piling using the specialist rail equipment



Working between the Road and the Rail