



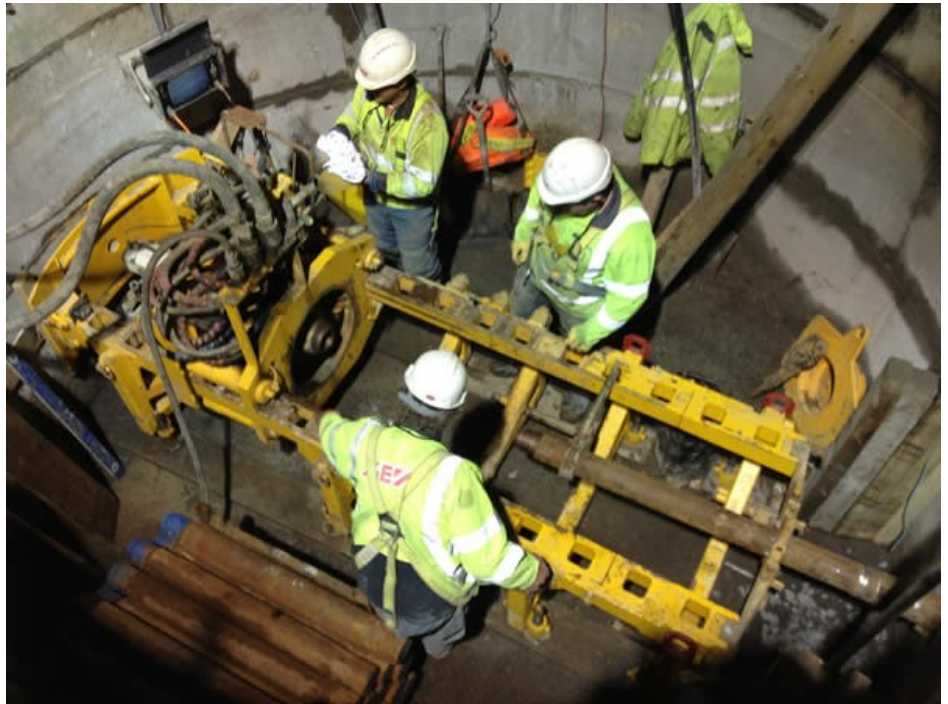
GUIDED AUGER BORING AT MINWORTH BIO GAS, MINWORTH

Client:

National Grid

Summary:

Install a sleeve for a new steel gas main linking a Severn Trent Waste Water Treatment Works biogas plant to the National Grid



PROJECT DETAILS

GUIDED AUGER BORING

- Design of reinforced concrete backwall
- Install DN225 x 25m Denlok pipes using the guided auger method

GROUND CONDITIONS

- Damp Sand & Gravel

