

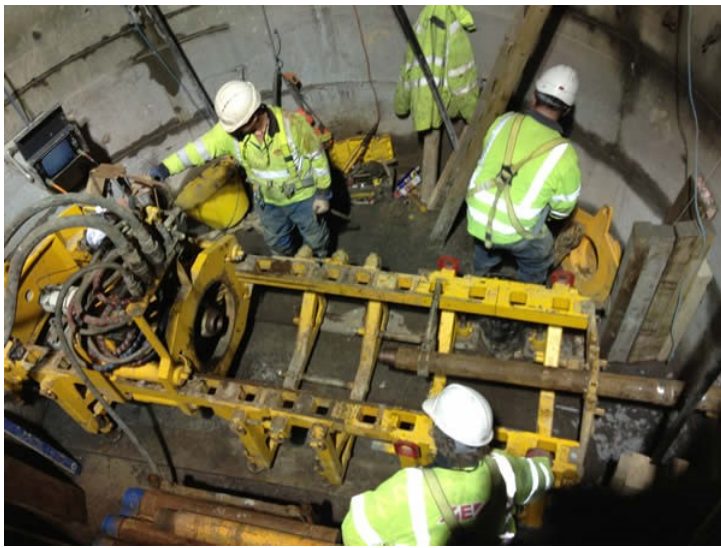
GUIDED AUGER BORING AT KINROSS PUMPING STATION, KINROSS.

Client:

Black and Veatch

Summary:

Pumping Station Improvements.



PROJECT DETAILS

GUIDED AUGER BORING

A E Yates Trenchless Solutions Ltd constructed DN4000 caisson shaft x 6m deep. Installed a 25m x DN225 sleeve pipe using our PB85V guided auger rig.

GROUND CONDITIONS

- Wet Sand - all works below water table